

Date	Revision
1.6.2022	2

Specification

1. Input Voltage: AC220-240V 50/60Hz
2. Wattage: 3W
3. Power factor:0.8PF
4. Lumens: 300lm.
5. Battery installed or replaced: Ni-Cd 3.6V 3Ah.
6. Operating environmental temp: -0°C to +35°C.
7. Recharge time: 24 hours.
8. Emergency duration: more than 3 hours.

Important Information

We recommend that luminaires are installed by a qualified electrician ensuring the installation complies with current IEE wiring regulations BS7671:2018 & local building control.

- All tests should be carried out in accordance to EN 50172:2004.
- BELL will not accept responsibility for any claims arising from a poor installation.
- The light source of this luminaire is not replaceable: when the light source reaches end of life, the whole luminaire must be replaced.

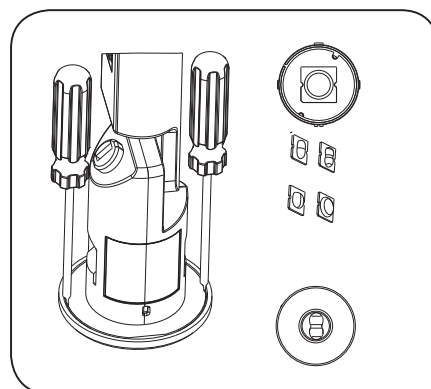
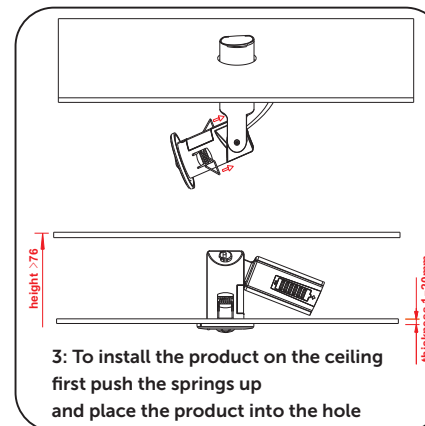
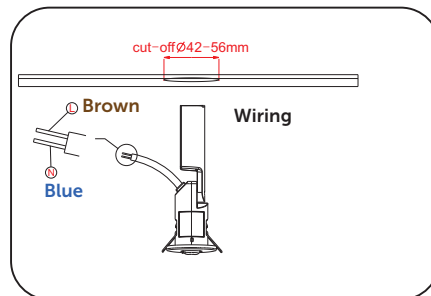
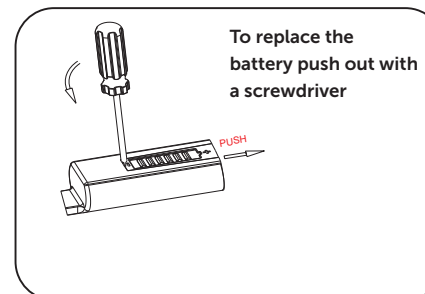
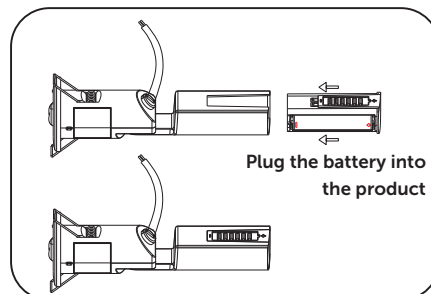
Important User Advice

- Ensure that there is adequate free air ventilation around the fitting.
- Always switch off mains supply before installing.
- Do not cover with any insulation.

Read these instructions before installation and retain for future reference

This equipment should be installed by a competent electrician

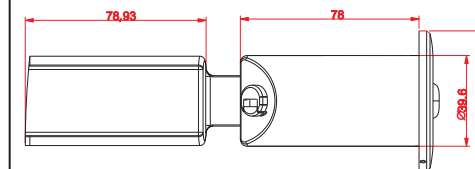
Installation / Mounting Options



To replace the lamp head

- 1: Use a screwdriver to open the cover
- 2: Remove the cover and change the lens.
- 3: Replace the cover

Dimensions:



Testing/Commissioning:

Functionality of the test switch

- 1) A short press (>1s) on the button will start a function test lasting 5 seconds (The battery's capacity should be more than 5%=charging 30mins)
- 2) Holding down the button(>10s) resets the timer(System-resets)

Functional test

Every 7 days the unit will light for 5s to check the functionality of the emergency unit, the batteries and LED module.

Duration test 3hrs

Initial duration test: The test will be carried out exactly 24 hours later after the initial installation.

Half year duration test: The test will be carried out on each random 180 -182 days.

This product may contain substances that can be hazardous to the environment if not disposed of properly. Electrical and electronic equipment should never be disposed of with general household waste but must be separated for its correct treatment and recovery.

Where possible recycle your packaging.



British Electric Lamps Ltd

Unit A Foxbridge Way, Normanton Industrial Estate
Normanton, West Yorkshire. WF6 1TN

T: +44 (0)1924 893380 F: +44 (0)1924 894320 E: sales@belllighting.co.uk

www.belllighting.co.uk

Technical Helpline +44 (0)1924 893380

www.belllighting.co.uk

Date	Revision
1.6.2022	2

Indicator LED

System status is displayed by a bi-colour LED

LED Indication	Status	Commentary
Permanent green	Standby, System OK	Mains Operation, battery is charged
Fast flashing green (0.25s on – 0.25s off)	Function test underway	Function test underway
Slow flashing green (1 s on – 1 s off)	Duration test underway	Duration test underway
Permanent Red	Lamp failure	Open Circuit or Short Circuit or LED failure
Fast flashing red (0.25 s on – 0.25 s off)	Battery capacity failure	Battery failed duration test
Slow flashing red (1 s on – 1 s off)	Battery fault	Incorrect battery voltage or Short Circuit or Open Circuit
Green and red off	Battery Operation	Emergency mode: Mains disconnected or Mains failure

Note

Fault status:

If an error is detected, the indicator LED switches to RED. If the error has been corrected please re-connect the battery after the mains power off, the LED indicator immediately switches back to GREEN when mains power is turned on.

Note

Battery failed duration test:

After exchanging the battery and holding down the button (>10S) reset the timer, the indicator LED switches to GREEN.



Installation Instructions: Emergency Self Test Downlight (09075)

Date	Revision
1.6.2022	2

Testing & Commissioning for Emergency Luminaire

- Ensure the Load is connected.
- Connect the battery.
- Switch on the Unswitched Supply
- Check the Charge LED illuminates.
- Switch on the Maintained Supply
- Check the LED illuminates as normal.
- Switch off the Maintained Supply.
- Switch off the Unswitched Supply
- Check the Charge LED extinguishes and the load LED illuminates at a reduced output.
- Enter the commissioning date on the Battery Pack.
Switch on the Unswitched Supply

Luminaire Ref/Location _____		In Case of difficulty, contact the Installation Engineers:- _____ Tel: _____								
Full Recharge Time 24 Hours		Duration 3 Hours			Lamp Type - LED					
ROUTINE TEST RECORD										
	Year 1		Year 2		Year 3		Year 4		Year 5	
Monthly Test	Signed	Date	Signed	Date	Signed	Date	Signed	Date	Signed	Date
Functional										
Functional										
Functional										
Functional										
Functional										
Functional										
Functional										
Functional										
Functional										
Functional										
Functional										
Three Hour										

British Electric Lamps Ltd
Unit A Foxbridge Way, Normanton Industrial Estate
Normanton, West Yorkshire. WF6 1TN

T: +44 (0)1924 893380 F: +44 (0)1924 894320 E: sales@belllighting.co.uk

www.belllighting.co.uk