

Installation Instructions: 09126

Date	Revision
1.3.2024	1

Read these instructions before installation and retain for future reference

This equipment should be installed by a competent electrician



Important Information

We recommend that luminaires are installed by a qualified electrician ensuring the installation complies with current IEE wiring regulations BS7671:2018 & local building control.

- All tests should be carried out in accordance to EN 50172:2004.
- BELL will not accept responsibility for any claims arising from poor installation.
- The light source of this luminaire is not replaceable, when the light source reaches end of life, the whole luminaire must be replaced.

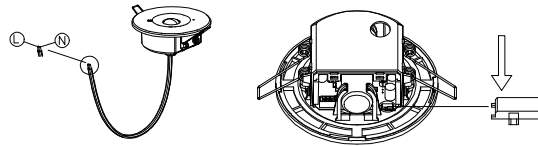
Important User Advice

- The ambient room temperature should not exceed 35°C.
- Ensure that there is adequate free air ventilation around the fitting.
- Always switch off mains supply before installing.

Specification

1. Supply Voltage: 220-240VAC 50/60Hz
2. Ambient Room Temperature: 0 to 35°C
3. Insulation Class: II
4. Ingress Protection: IP20
5. Battery Recharge Time: 24 hours
6. Wattage: 1.2W
7. Emergency duration: more than 3 hours
8. Lumens: 150lm (Open), 110lm (Corridor)
9. Battery installed: LiFePO4 3.2V 1500mAh
10. Deep Discharge Protection DDP
11. Non-maintained Operation

Wiring Diagram

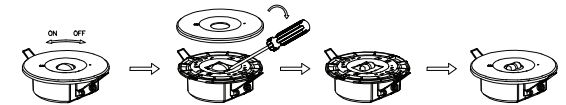


Selecting the test mode:

- Step 1: Switch the product mode using the switch shown by the arrow.
- Step 2: Push switch to the left to switch the product mode to manual test mode.
- Step 3: Push switch to the right to switch the product mode to self-test mode

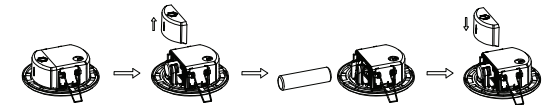
Changing the lens:

- Step 1: Turn the bezel anticlockwise to remove the bezel.
- Step 2: Carefully pry out the lens.
- Step 3: Replace with alternative lens.
- Step 4: Replace the bezel by rotating it clockwise to affix into place.



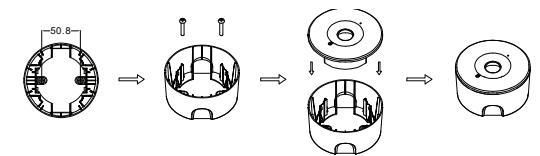
Changing the battery:

- Step 1: Push the side cover upwards and remove it in the direction indicated by the arrow.
- Step 2: Remove the old battery and replace, ensuring correct polarity is maintained.
- Step 3: Replace the side cover.



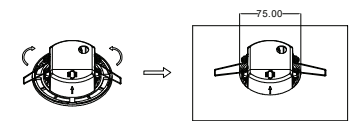
Surface mounted product installation:

- Step 1: Drill out installation holes according to dimensions shown in the diagram.
- Step 2: Using wall plugs and screws, affix the surface mounted fittings to the wall/ceiling.
- Step 3: Wire up the luminaire, insert it into the surface mounted accessory in the direction indicated by the arrow to complete the installation..



Recess mounted product installation:

- Step 1: Aperture for recessed mounting: 75-90mm
- Step 2: Wire up the luminaire, push the spring on each side upward as shown in the diagram.
- Step 3: Insert luminaire into the aperture to complete the installation



Installation Instructions: 09126

Date	Revision
1.3.2024	1

Read these instructions before installation and retain for future reference

This equipment should be installed by a competent electrician



Functionality of the test switch

- A short press (1s) on the button starts a function test lasting 5 seconds.
- Holding down the button (>10s) resets the timer (System reset)

Functional test – Self-test Mode

- The functional test lasts for 5 seconds and occurs every 7 days, to check the functionality of the emergency unit, the batteries and LED module.

Please note: If a mains supply failure occurs while a functional test is in progress, the test shall be postponed, and the system will enter emergency operation. Following restoration of the mains supply, a postponed functional test shall re-commence automatically as soon as conditions permit.

Duration test – Self-test Mode

- 24 hours after installation, a 3-hour duration test is performed.
- 3 hour duration tests are performed every 180 - 182 days to check the battery capacity.

Please note: A duration test will only be started once the battery is fully charged and if a mains supply failure occurs while a duration test is in progress, the test shall be postponed, and the system shall enter emergency operation. Following restoration of the mains supply, a postponed duration test shall re-commence automatically once the battery is fully re-charged.

The indicator will be slow flashing Green for 5 days once the duration test has been carried out successfully.

Indicator LED System status is by the bi-colour indicator LED.

LED Indication	Status	Description
Permanent Green	Standby, System OK	Mains operation, battery is charged
Fast flashing Green (0.25s on 0.25s off)	Function test underway	Function test underway
Slow flashing Green (1s on 1s off)	Duration test underway	Duration test underway
Permanent Red	Lamp failure	Open Circuit or Short circuit or LED failure
Fast flashing Red (0.25s on 0.25s off)	Battery capacity failure	Battery failed duration test
Slow flashing Red (1s on 1s off)	Battery fault	Incorrect battery voltage or Short circuit or OpenCircuit
Green and Red off	Battery Operation	Emergency mode: Mains disconnected or Mains failure

Please note:

- Fault status: If an error is detected, the indicator LED switches to **RED**. Once the error has been corrected, after re-connecting the battery with the mains power disconnected, the indicator LED will switch back to **GREEN** when mains power is re-applied.
- Battery failed duration test: After an exchange of the battery and holding down the button (>10S) to reset the timer, the indicator LED will switch to **GREEN**
- Always select the desired test mode before applying the power. Do not switch test mode whilst the luminaire is powered.
- If Self-test mode is selected, additional Manual tests are not required and if performed, will cause premature failure of the battery.

This product may contain substances that can be hazardous to the environment if not disposed of properly. Electrical and electronic equipment should never be disposed of with general household waste but must be separated for its correct treatment and recovery.

Where possible recycle your packaging.

