

Installation Instructions: Gear Tray (11606-09)

Date	Revision
11.01.2023	1

Read these instructions before installation and retain for future reference

This equipment should be installed by a competent electrician



Important Information

We recommend that luminaires are installed by a qualified electrician ensuring the installation complies with current IEE wiring regulations BS7671:2018 & local building control.

- All tests should be carried out in accordance to EN 50172:2004.
- BELL will not accept responsibility for any claims arising from a poor installation.

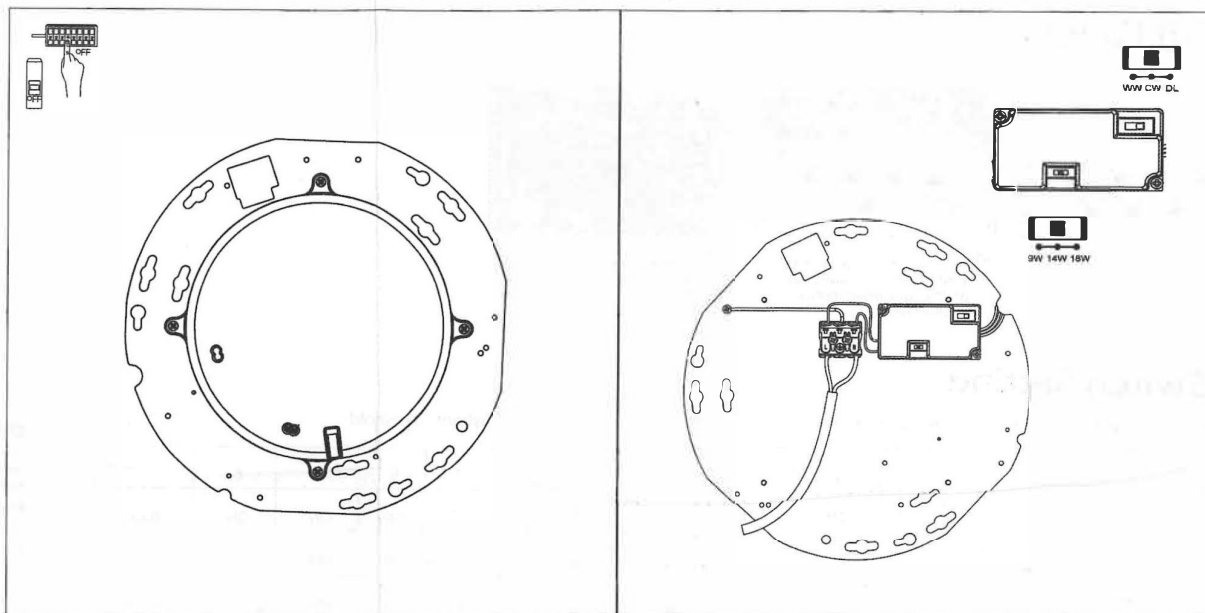
Important User Advice

- The ambient room temperature should not exceed 30°C.
- Always switch off mains supply before installing.

This product may contain substances that can be hazardous to the environment if not disposed of properly. Electrical and electronic equipment should never be disposed of with general household waste but must be separated for its correct treatment and recovery.

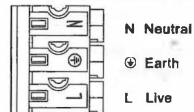
Where possible recycle your packaging.

You are advised to test 5 samples before mass application of sensors in a new lighting project.

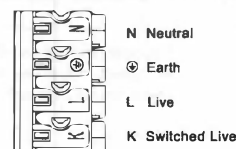


Wiring Diagrams

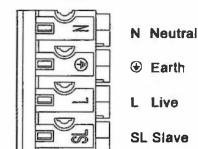
Standard / with Dimming Sensor:



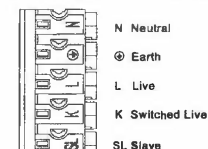
Emergency / Emergency c/w Dimming Sensor:



Microwave Sensor:



Emergency c/w Microwave Sensor:



Slave function is only available in the on/off sensor versions up to a maximum of 10 additional fittings



Installation Instructions: Gear Tray (11606-09)

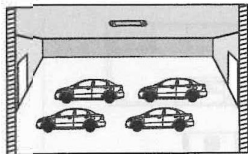
Date	Revision
11.01.2023	1

Read these instructions before installation and retain for future reference

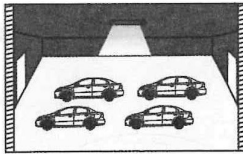
This equipment should be installed by a competent electrician



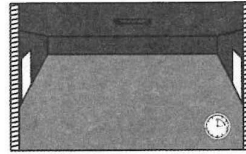
On/Off Function



1 With sufficient ambient light, the light will not be switched on even if with motion signal.



2 With insufficient ambient light, the sensor switches on the light when motion is detected.



3 After elapse of hold time, the sensor switches off the light when no motion is detected.

DIP Switch Setting

Detection Area (Sensitivity)

	1	2
100%	ON	ON
75%	-	ON
50%	ON	-
25%	-	-

Hold Time

	3	4	5	
I	ON	ON	ON	5S
II	-	ON	ON	30S
III	ON	-	ON	90S
IV	-	-	ON	5min
V	ON	ON	-	20min
VI	-	-	-	30min

Daylight Threshold

	6	7	8	
I	ON	ON	ON	2Lux
II	ON	ON	-	10Lux
III	-	ON	-	30Lux
IV	ON	-	-	50Lux
V	-	-	-	Disable*

Disable means the daylight sensor not work. it will turn on light once motion is detected regardless of ambient light .

Override Function

Quick switch ON/OFF 3 times within 2sec to override sensor function. Lights will switch on all the time. Power off and on again to recover sensor function.

Initialization

After power on, the sensor automatically turns on light at 100% brightness. After 10sec, it turns off the light. During the initialization, the sensor is not able to detect movement.

Factory Setting

Detection area: 100%, Hold Time: 5S, Daylight Sensor: Disable

Technical Helpline +44 (0)1924 893380
www.belllighting.co.uk

British Electric Lamps Ltd
Unit A Foxbridge Way, Normanton Industrial Estate
Normanton, West Yorkshire. WF6 1TN

T: +44 (0)1924 893380 F: +44 (0)1924 894320 E: sales@belllighting.co.uk

www.belllighting.co.uk