

# ToughLED™ Pro Range

Installation instructions for ToughLED™ Pro

## WARNINGS AND CAUTIONS

- To avoid electric shock ⚠ or serious injury or property damage, isolate power before installing, removing or servicing the product
- It is recommended that this product is installed by an electrician or a competent person with sufficient experience to install this product
- To be installed in accordance with the local current wiring regulations and standards
- Any broken or damaged parts should be replaced as soon as possible, JCC will not accept responsibility for claims arising from sub-standard installations; which will void the warranty
- Ensure that you have the tools and accessories required to complete the installation correctly
- The ambient room temperature should not exceed 25°C. This luminaire is suitable for indoor or outdoor use: this product is IP66

## INSTALLATION INSTRUCTIONS

ENGLISH

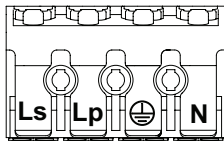
- Read instructions and check that you have all of the tools and accessories required to complete the installation correctly. Isolate power supply before starting the installation.


**Specifications:** Colour temp: 4000K Ra: >80

### Mains input connection

220-240V 50/60Hz / Class I Ⓢ

- Ls = Live switched
- Lp = Live permanent
- Ⓢ = Earth
- N = Neutral



**Wire preparation:** 0.5-2.5mm 

Wire the mains input supply to the terminal block as per the diagram shown above: (Ls) Switched Live, Ⓢ earth and (N) neutral (Lp) Live permanent (EM versions only). Power up fitting to ensure that it is functioning correctly.

ToughLED™ Pro has been designed to allow for multiple installation options, using the surface mounting brackets (Fig.1.), suspended with the addition of the suspension triangle (Fig.2.) to the surface mounting bracket or for use with conduit directly to BESA boxes (Fig.3.) All fixing points are clearly marked on the inside and outside of the base with pilot guides for accurate pre-drilling.

ToughLED™ Pro not only provides cable entry, ends, rear and sides (Fig.4.), but also provides a solution for maintaining IP ratings when entering from the rear on surface mounted or suspended applications with the two part IP66 gasket (Fig.5. to Fig.5.c).

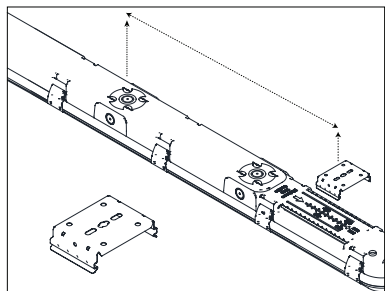
The body has been designed with an ultra wide surface mounting bracket rail to provide a large tolerance for bracket connection to the fitting. Ruler guides are embossed into the rear of the polycarbonate base for easy location of fixing points from the centre (Fig.6.). This aids in accuracy when retrofitting or installing fixing points outside of the standard 600mm center points.

In addition, ToughLED™ Pro allows for the terminal block to be repositioned to any of the cable entry points, eliminating the need to add additional cable lengths when retrofitting onto existing wiring schemes. Cable restraint clips along the length of the fitting ensures that cables are cleanly kept from hanging down inside the body and clashing with the tray and diffuser when closing the fixture (Fig.7.). There is laser guide incorporated on both the inside and outside of the base for ease of installation, ensuring that the body can be installed accurately. There are security straps that prevent the plate from falling during installation and servicing.

In addition to the ability to reposition the terminal block, the earth connection to the gear tray can also be moved to accommodate the change to the terminal block position (Fig.8).

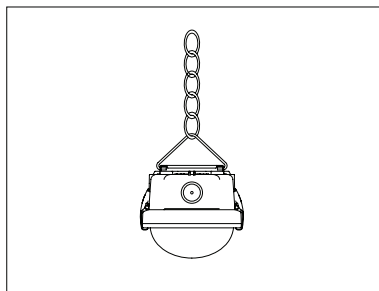
Side fastening clips come connected in their closed position. The clips are designed to provide clear finger access for unclipping, with rolled tops to avoid sharp edges and can be secured into a 90° position when installing (Fig.9), additional security locking screws are provided for clips.

Fig.1.



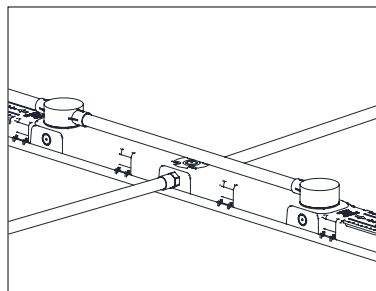
Measure from the from the centre to aid in accurate installation, whether retrofitting or installing fixing points outside of the standard 600mm center points.

Fig.2.



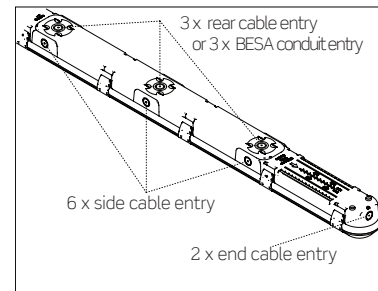
Quick and simple solution to suspend the fitting, with the addition of the triangular clip to the surface mounting bracket. The fitting comes complete with the surface and triangular brackets (Chains not supplied).

Fig.3.



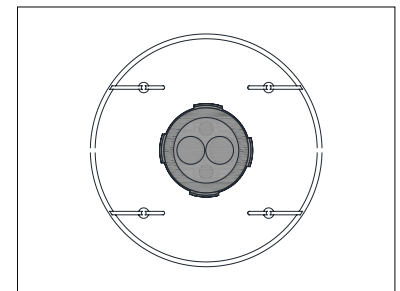
Select your preferred BESA mounting options from the three positions on the rear of the fitting or use the side or end cable entry points to fit conduit to meet the specific installation requirements.

Fig.4.



Select your preferred cable entry point on the fitting to meet the installation requirements. Only drill the pre-marked cable entry points, do not drill anywhere else on the body, this may effect IP rating.

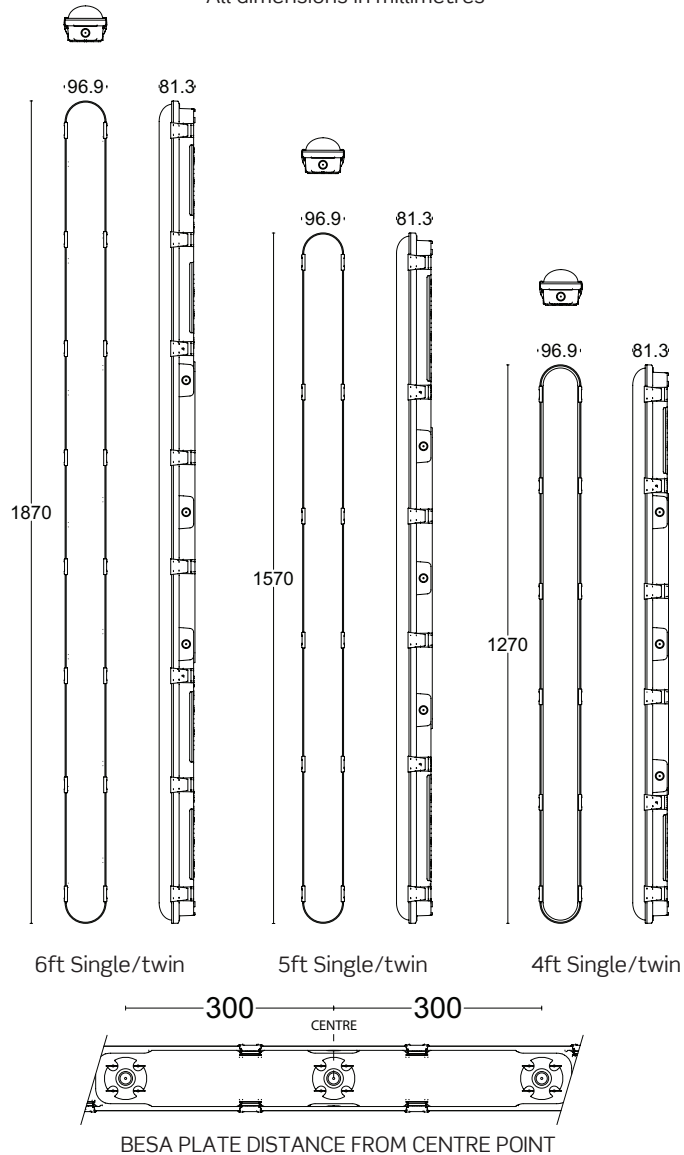
Fig.5.



Rear cable entry two part IP66 gasket designed with loop in/loop out cable guides for continuous wiring.

# Profile & Dimensions

All dimensions in millimetres

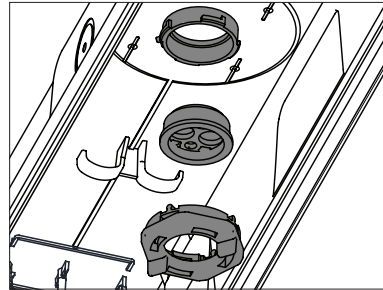


## Important warranty information

This product is supported by a 2-year standard warranty which will extend to 5-years if registered within the first year of purchase. Please register at [jcc.co.uk/warranty](http://jcc.co.uk/warranty) (Terms and conditions apply).

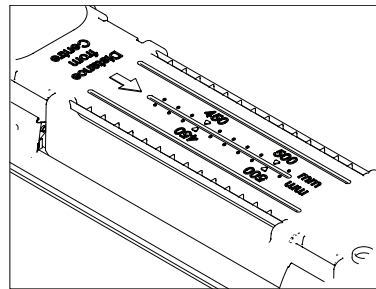
The installer will be asked to provide the following information, which is detailed on a label attached to the luminaire's chassis: Product Code/Date Code.

Fig.5a.



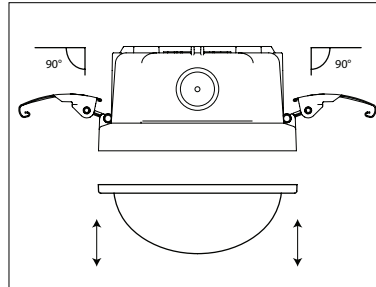
Two part surface mounting IP66 gasket maintains ingress protection.

Fig.6.



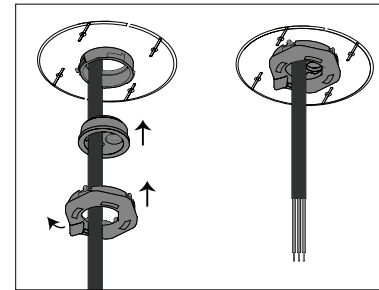
Ultra wide surface mounting bracket rail provides a large tolerance for bracket connection to the body.

Fig.9.



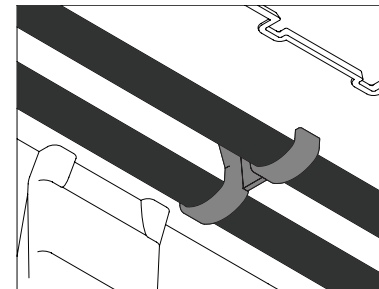
Ultra secure side clip design, ensures that clips do not detach from fixture unless purposefully removed. Side fastening clips can be secured into a 90° position when installing.

Fig.5b.



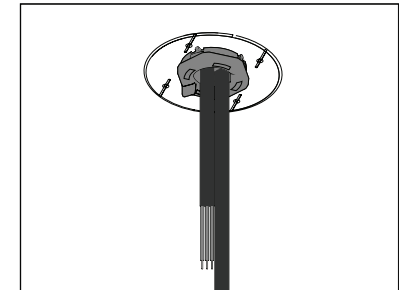
Pierce the gland and insert cable, then slide up into position into the rear cable entry, push the locking collar into place and rotate to secure.

Fig.7.



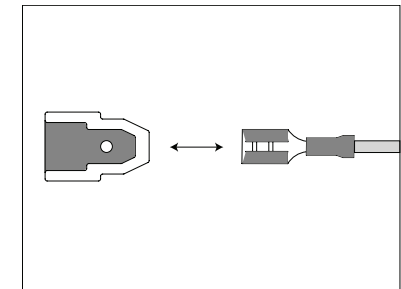
Cable restraint clips along the inside of the fitting avoid cables interfering with the closing of the fixture.

Fig.5c.

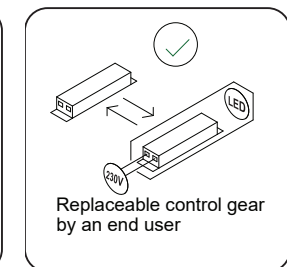
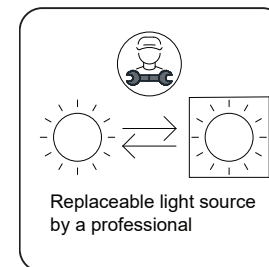


Two part IP66 gasket is suitable for loop in/loop out continuous wiring.

Fig.8.



Always ensure that the earth terminal connection is maintained if the diffuser/gear tray is removed from the body for installation, servicing or when repositioning the terminal block in the body.



## You can help protect the environment.

Please remember to respect the local regulations: Hand in the non-working electrical equipment to an appropriate waste disposal centre. The packaging material is recyclable. Dispose of the packaging in an environmentally friendly manner and make it available for the recyclable material collection service. Consider repairing if components fail outside the Warranty period, please contact JCC for a list of available replacement parts.