

Architectural GU10 Pendant

Installation instructions for JC84220

JCC | a **LEVITON** company

Warnings & Cautions

- To avoid electric shock, serious injury or property damage, isolate power before installing, removing or installing the product
- It is recommended that luminaires are installed by a qualified electrician and the installation complies with the local current wiring regulations
- It may be necessary to upgrade your MCBs to allow for increased inrush current
- This product is for indoor use only
- Any broken or damaged parts should be replaced as soon as possible. JCC will not accept responsibility for claims arising from sub-standard installations; which will void the warranty
- These products are designed for connection to a 220-240V~ 50/60Hz
- The light source in this luminaire is replaceable: when the light source reaches its end of life the light source can be replaced by the end user
- Do not use halogen lamps in this product

INSTALLATION

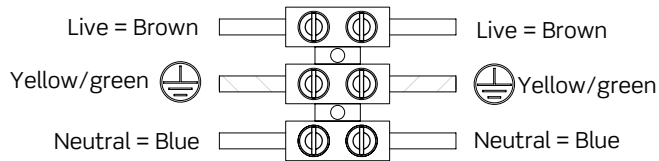
ENGLISH

Specification: GU10 cap 7W LED max (lamp not included)

Available finishes: Black(BLK) or White(WH)

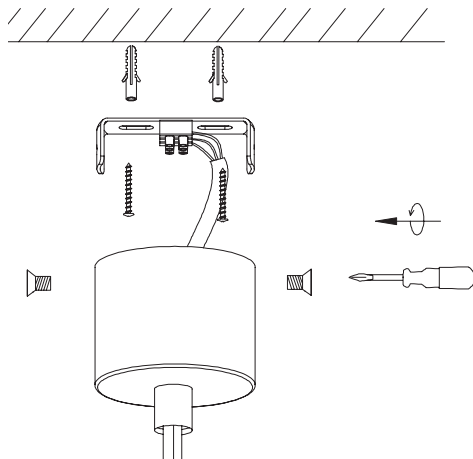
220-240V~ 50/60Hz Class I

Figure 1. Mains Input

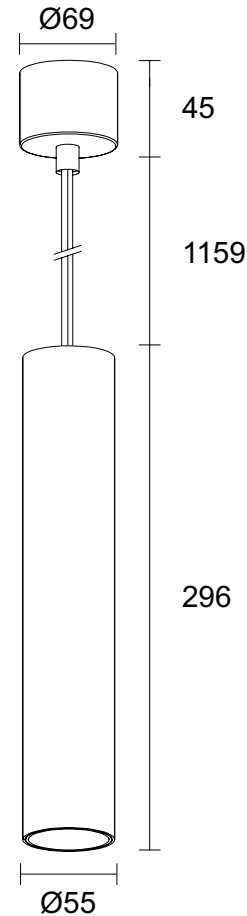


Installation

1. Determine mounting location using the mounting bracket as a template, drill holes and insert plastic plugs provided before fixing bracket with screws into the ceiling.
2. Connect the mains supply as indicated in Fig.1
3. Align mounting holes between back plate and mounting bracket, then secure together with screws provided.
4. Place lamp into lampholder.
5. Reconnect mains power supply and test for operation.



Profile & Dimensions



All dimensions in millimetres

UK CE IP20 jcc.co.uk

You can help protect the environment. Please remember to respect the local regulations: hand in the non-working electrical equipment to an appropriate waste disposal centre. The packaging material is recyclable. Dispose of the packaging in an environmentally friendly manner and make it available for the recyclable material collection service.

Important warranty information

This product is supported by a 2-year standard warranty which will extend to 3 years if registered within the first year of purchase. Please register at jcc.co.uk/warranty - Terms and conditions apply.

The installer will be asked to provide the following information, which is detailed on a label attached to the luminaire's chassis:
Product Code/Date Code.

BS EN ISO9001 - 2015 - Registered Firm Certificate No. GB 1552
JCC Lighting Products Ltd. Lux Park, Chichester Business Park, City Fields Way, Tangmere, Chichester, West Sussex, PO20 2FT
Technical Support: +44(0)1243 838986 Customer Services: +44(0)1243 838999

V2_Oct_22_RS